

ALASKA DIVISION OF HOMELAND SECURITY & EMERGENCY MANAGEMENT



SITUATION REPORT 24-284 • October 10, 2024

Toll-Free 1.800.478.2337

Anchorage Area 907.428.7000

SEOC 907.428.7100

<p><u>SEOC Preparedness Level</u> Level 1-Routine Operations</p>	<p>http://ready.alaska.gov</p>	<p><u>National Terrorism Advisory System:</u> Read the NTAS Bulletin here</p>
<p><u>Maritime Security (MARSEC)</u> Level:1- Minimum Appropriate Security Measures</p>	<p>WHO Novel Coronavirus Pandemic (COVID-19): 2019 Novel Coronavirus</p>	<p><u>Alaska Military Installation Force Protection</u> <u>Level:</u> FPCON Bravo</p>

(Significant changes from previous situation reports are red.)

Significant Issues:

National Hurricane Support:

Alaska State Emergency Operations Center (AK SEOC) has deployed the following, under the National Mutual Aid System - Emergency Management Assistance Compact (EMAC) - in support of states impacted by Hurricanes Helene and Milton.

- Florida: Volunteer Agency Liaison working in Suwannee and Taylor counties
- Virginia: Volunteer Agency Liaison working in the State Emergency Operations Center
- North Carolina: Two person Operations and EMAC support team working in the State Emergency Operations Center
- North Carolina: 4-person Incident Management Team working as county Emergency Operations Center support

Approved Mission Orders and Deploying Today:

- Florida: Alaska National Guard team of 50 service members to support debris clearing and distribution of disaster relief supplies.
- AK SEOC is on a daily national Hurricane Response Call and will offer additional National Guard, Emergency Management, and other state agency personnel as requests are received and Alaska personnel or equipment are appropriate.

Ketchikan Landslide Disaster:

- A Joint Preliminary Damage Assessment (JPDA) continues today with the Federal Emergency Management Agency to support consideration of a request for federal assistance for August's landslide disaster.

Geomagnetic Storm Alert - The Space Weather Prediction Center has issued a watch for a Category G4 or higher geomagnetic storm, with potential impacts expected on October 10th and 11th.

Department of Health (DOH):

For current information, see: <https://health.alaska.gov/dph/Pages/default.aspx>
<https://health.alaska.gov/dph/Emergency/Pages/prepared/default.aspx>

NTAS Bulletin:

The U.S. Department of Homeland Security issued an updated National Terrorism Advisory Bulletin on May 24, 2023. The current and expired bulletins can be viewed at the below link.

<https://www.dhs.gov/national-terrorism-advisory-system>

Travel Alerts and Conditions:

For current driving conditions, dial 511 or visit: <https://511.alaska.gov/>

Barry Arm Landslide / Tsunami Risk:

For the latest information on the Barry Arm Landslide and Tsunami risk, click here:

<https://dggs.alaska.gov/hazards/barry-arm-landslide.html>

Earthquakes:

United States Geological Service (USGS) Earthquake Information: <http://earthquake.usgs.gov/>

National Tsunami Warning Center: <http://tsunami.gov/>

Alaska Volcanoes:

Great Sitkin Alert Level: **Watch** and Aviation Color Code: **Orange**

For Alaska Volcano updates, go to: <https://www.avo.alaska.edu/>

Air Quality Index (AQI) Advisories:

For the most up-to-date Air Quality Index Advisories:

<http://dec.alaska.gov/Applications/Air/airtoolsweb/Home/Index>

Spills of Oil and Hazardous Substances:

The Alaska Division of Environmental Conservation (ADEC) Spill Prevention and Response page is located at: <https://dec.alaska.gov/spar/>

Alaska Cyber Security Information:

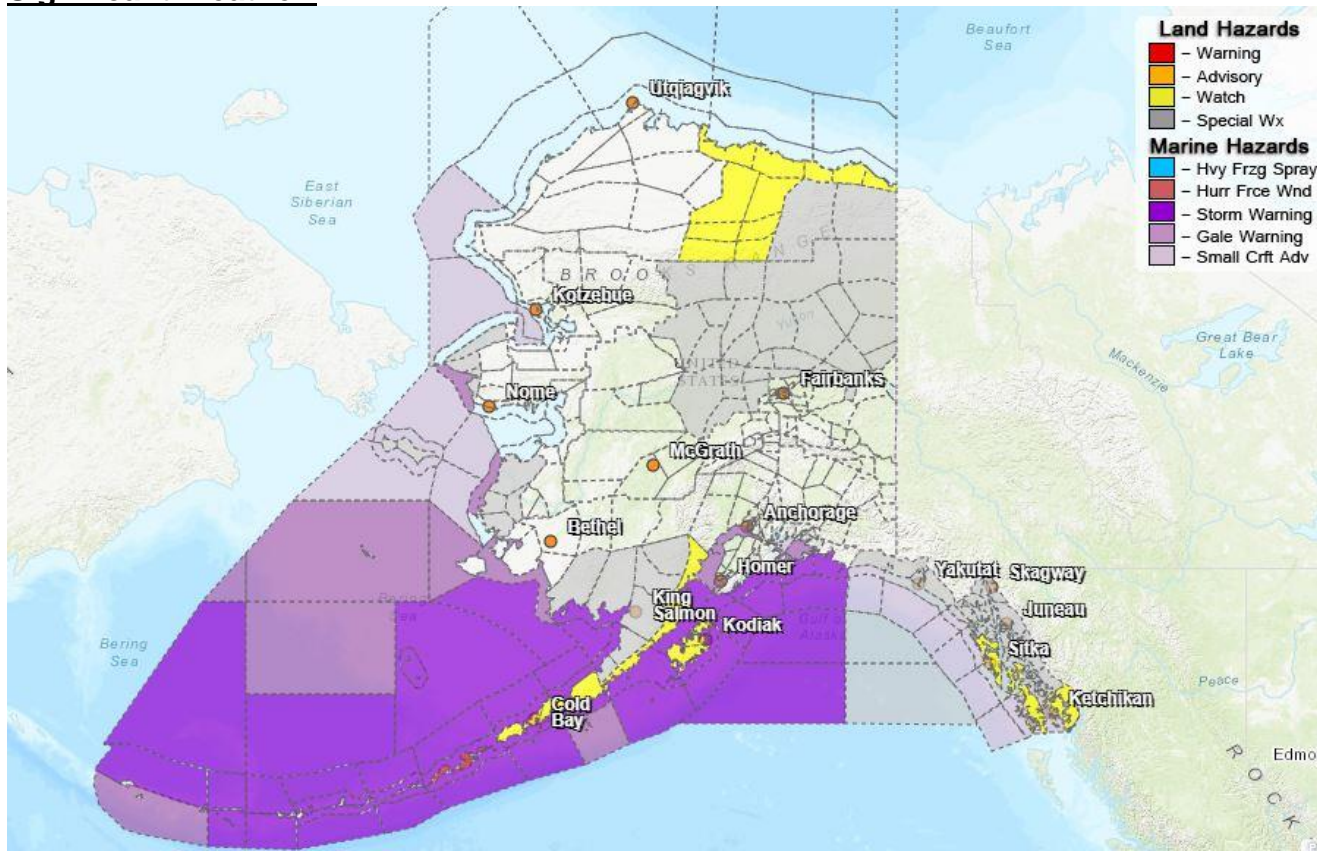
State Employees may sign up for cybersecurity notifications and alerts at:

<https://oit.alaska.gov/security>

Cybersecurity and Infrastructure Security Agency (CISA)-Cybersecurity Services and Tools:

www.cisa.gov/free-cybersecurity-services-and-tool

Significant Weather:



Special Weather Statement:

- **Romanzof Mountains, South Slopes Of The Eastern Brooks Range; South Slopes Of The Central Brooks Range; Upper Koyukuk Valley; Dalton Highway Summits; Yukon Flats; White Mountains and High Terrain South of the Yukon River; Central Interior – Accumulating snow over the weekend.**
- **City and Borough of Yakutat; Municipality of Skagway; Haines Borough and Klukwan; Glacier Bay; Eastern Chichagof Island; Cape Fairweather to Lisianski Strait; City and Borough of Sitka; Admiralty Island; City and Borough of Juneau; Petersburg Borough; Western Kupreanof and Kuiu Island; Prince of Wales Island; City and Borough of Wrangell; Ketchikan Gateway Borough; Annette Island – Heavy rain late Friday into Sunday evening.**
- **Shishmaref; Bering Strait Coast; Yukon Delta Coast; St Lawrence Island – Snow showers and gusty winds through Saturday.**

High Wind Watch:

- **City and Borough of Sitka, Western Kupreanof and Kuiu Island; Prince of Wales Island; Ketchikan Gateway Borough; Annette Island, Alaska Peninsula – Untill Saturday afternoon.**

High Wind Warning:

- **Eastern Aleutians – Untill 6pm Saturday.**

Winter Storm Watch :

- **Central Beaufort Sea Coast; Eastern Beaufort Sea Coast; Central Arctic Plains; Central Brooks Range** – From Saturday through Sunday night.

For more information and the most current Weather, Watches/Warning/Advisories go to:

<https://www.weather.gov/arh/>

The Next Situation Report will be on **October 11, 2024**. An interim report will be prompted by a significant change in the situation or the threat level. This report is posted on the internet at

<https://ready.alaska.gov/sitrep>.

To register for email distribution, PLEASE go to:

<http://list.state.ak.us/mailman/listinfo/dhsem.situation.report>.

Direct questions regarding this report to the SEOC at 907-428-7100 or seoc@alaska.gov.